

Connecting to Datalinx APN using an EDGE-enabled Modem

Summary:

1. Add EDGE 115200 bps modem.
2. Configure modem to have no hardware handshaking.
3. Enter AT initialization command
For MTN - AT+CGDCONT=1,"IP","DATASERVE.CO.ZA";^SGAUTH=2
For Vodacom - AT+CGDCONT=1,"IP","DATALINX.CO.ZA";^SGAUTH=2
4. Create new dial-up connection.
5. Enter *99**1# as the dial-up number.
6. Enter username and password and press OK.
7. Check that your IP is correctly allocated by the APN.
8. If you will be using this connection for IP to IP connections, make sure that the "Use default gateway on remote network" checkbox is not checked

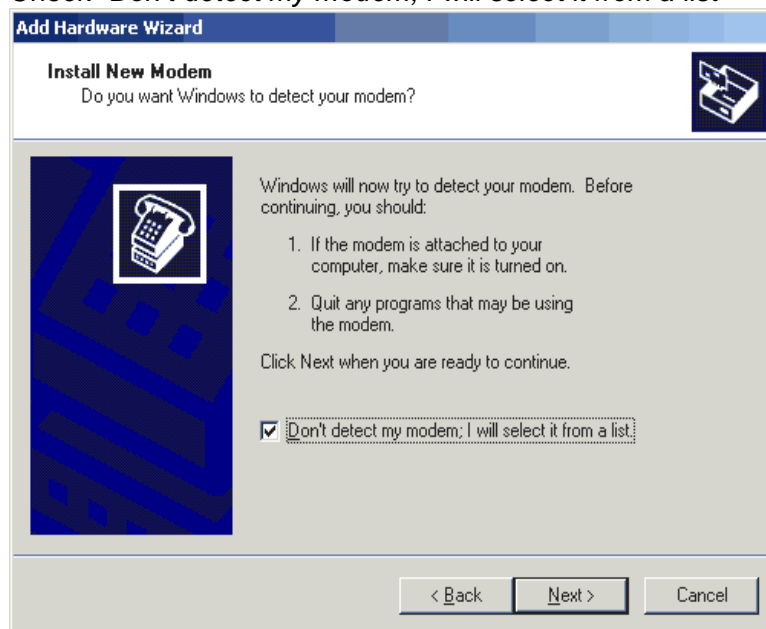
1. Abbreviations.

APN Access Point Name
CID Context Identity
PDP Packet Data Protocol

2. Adding a new modem.

Add a standard modem via the control panel.

Check *"Don't detect my modem; I will select it from a list"*

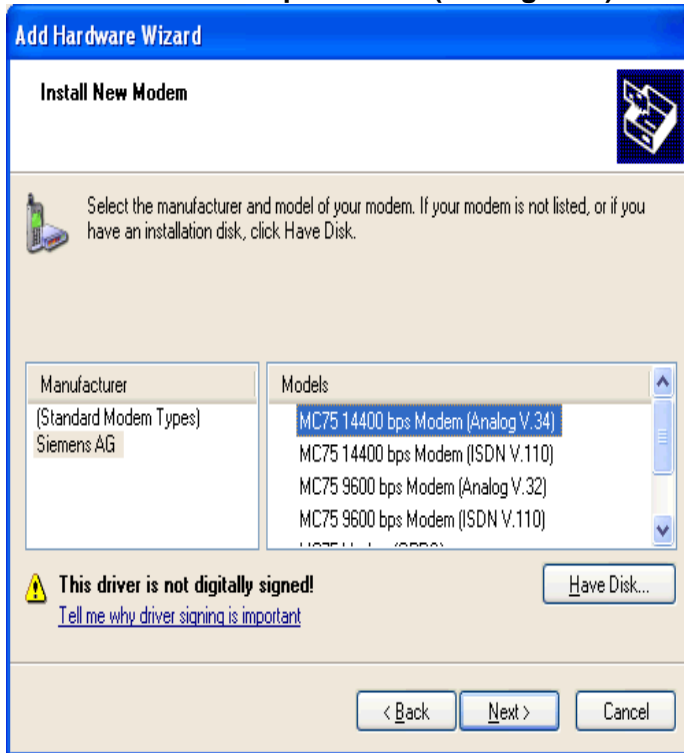


Select **"Have Disk"**

Use the Browse button to select the folder where you have saved the drivers.

Select **Siemens AG** under Manufacturer.

Select **MC75 14400 bps Modem (Analog V.34)** under Models



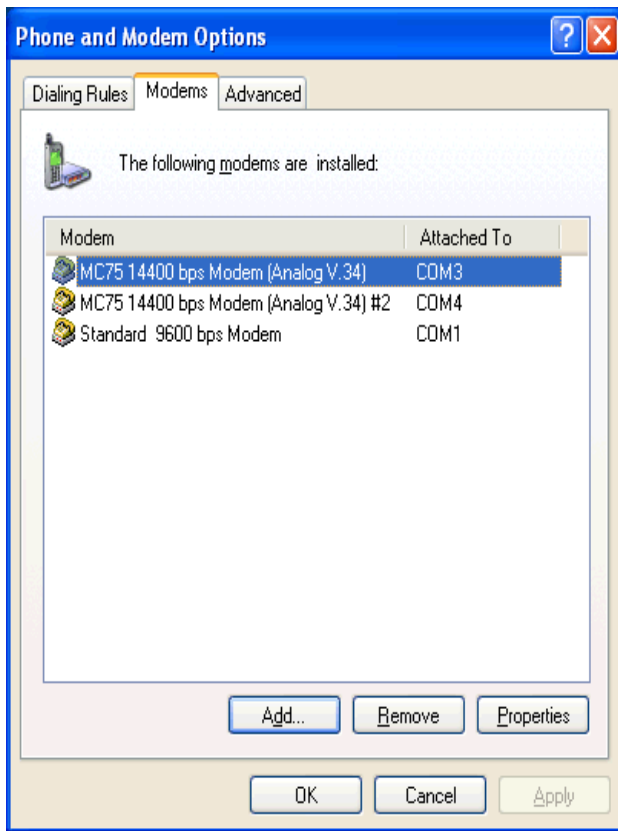
Select the com port to which the modem is connected and continue.

Select **continue anyway**

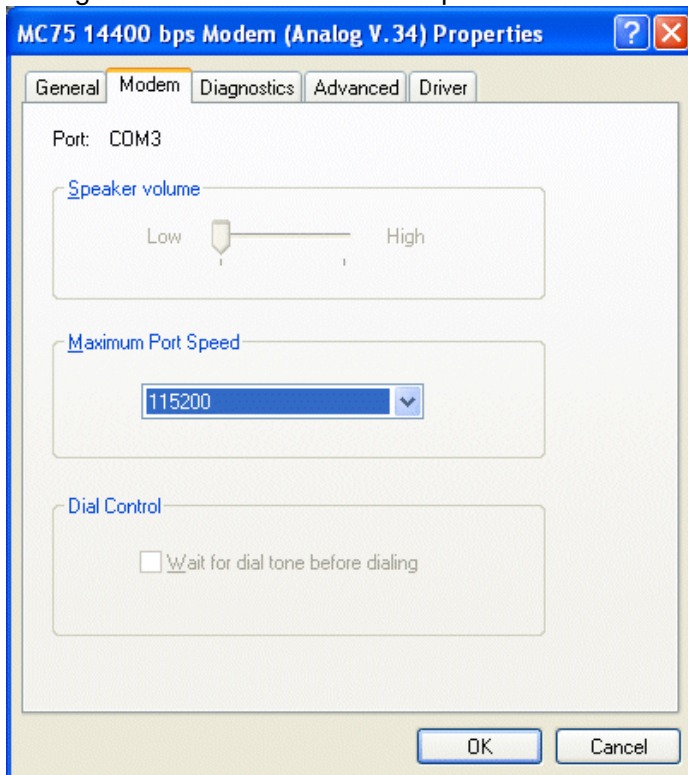
Follow the instructions on the screen and click **Next** to finish the modem installation.

3. Configuring the modem driver.

To configure the modem driver, select **Properties** of the newly created modem.



Change the baud rate to 115200 bps from the **Maximum Port Speed** drop down box.



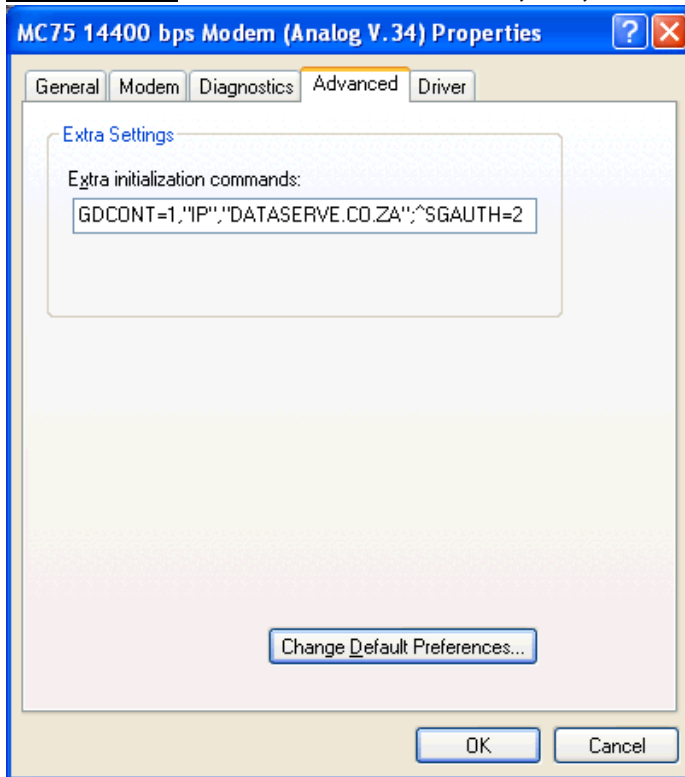
Next select the advanced tab and enter the following AT command in the **Extra Settings** option.

For MTN -

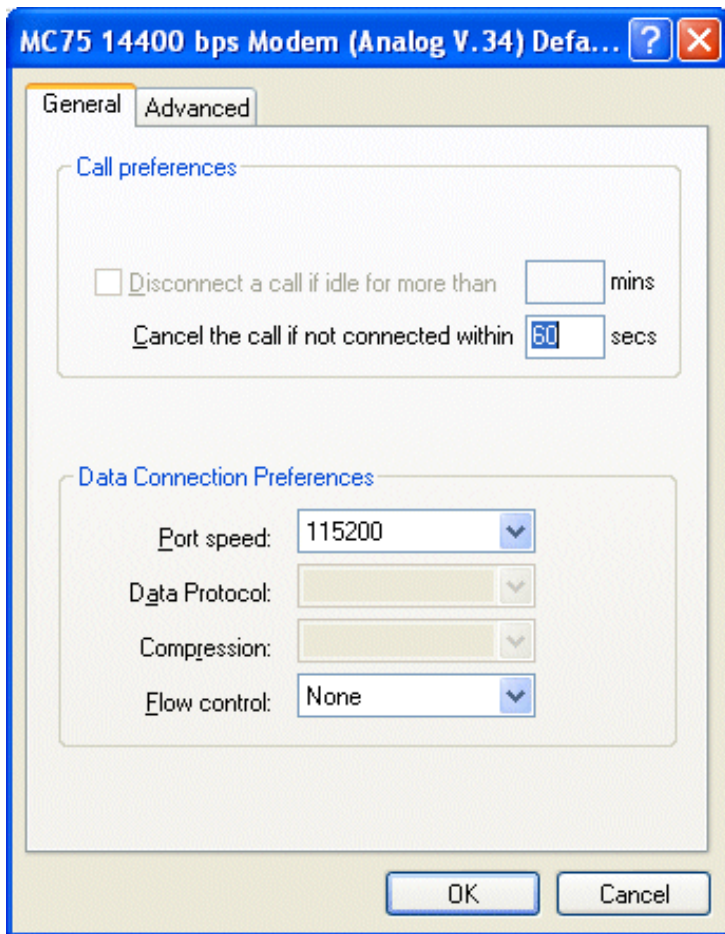
AT+CGDCONT=1,"IP","DATASERVE.CO.ZA";^SGAUTH=2

For Vodacom -

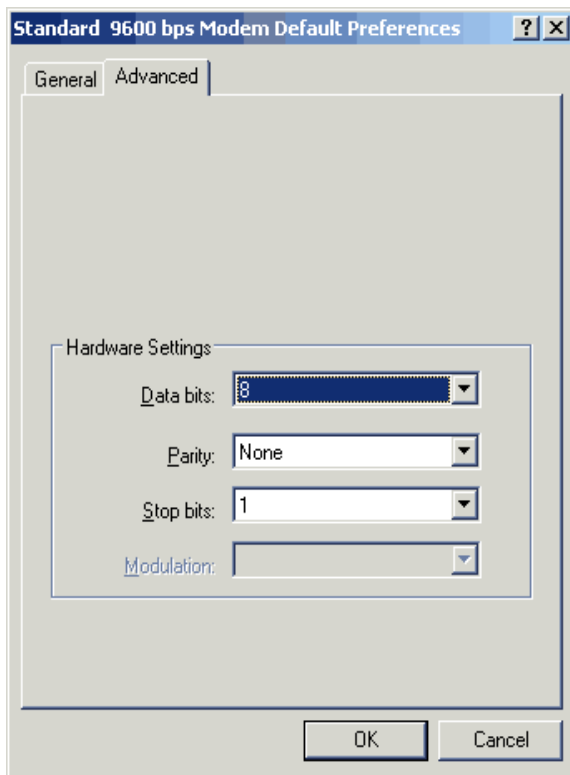
AT+CGDCONT=1,"IP","DATALINX.CO.ZA";^SGAUTH=2



Press the **Change Default Preferences** button at the bottom of the advanced window and select **None** from the **Flow control** drop down box.



Press the **Advanced** tab and select **None** from the **Parity** drop down box.



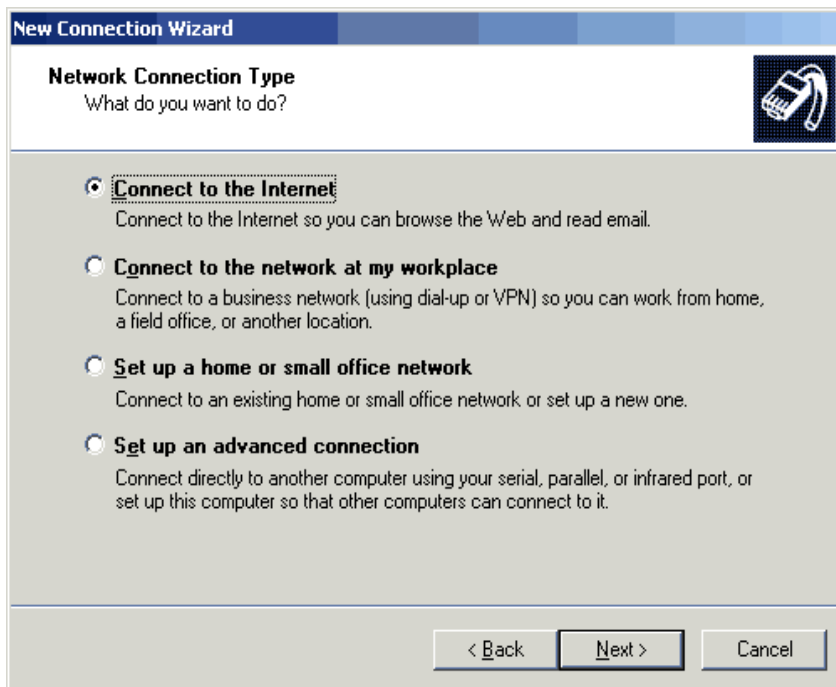
The modem is now configured. Press **OK** to continue.

4. Create a Dial-up Connection

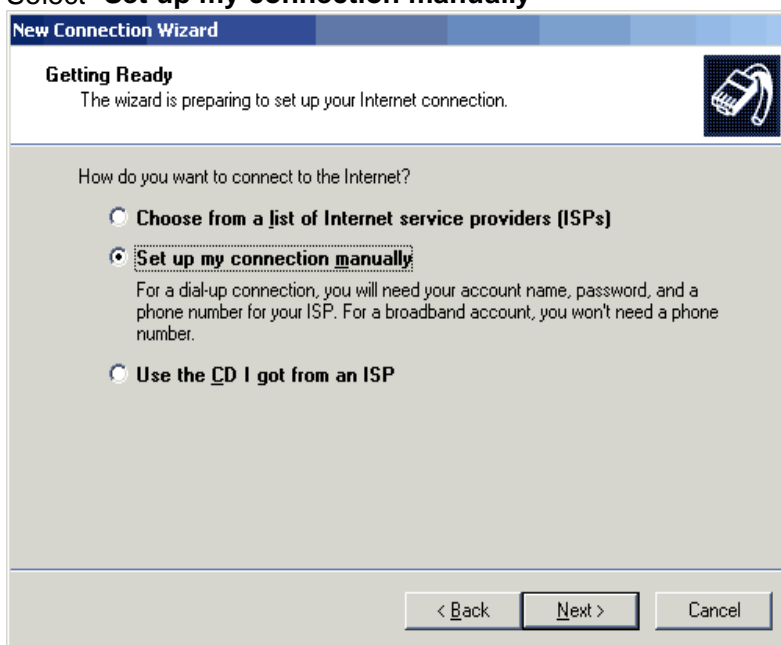
Create a new dial-up connection using the Connection Wizard.



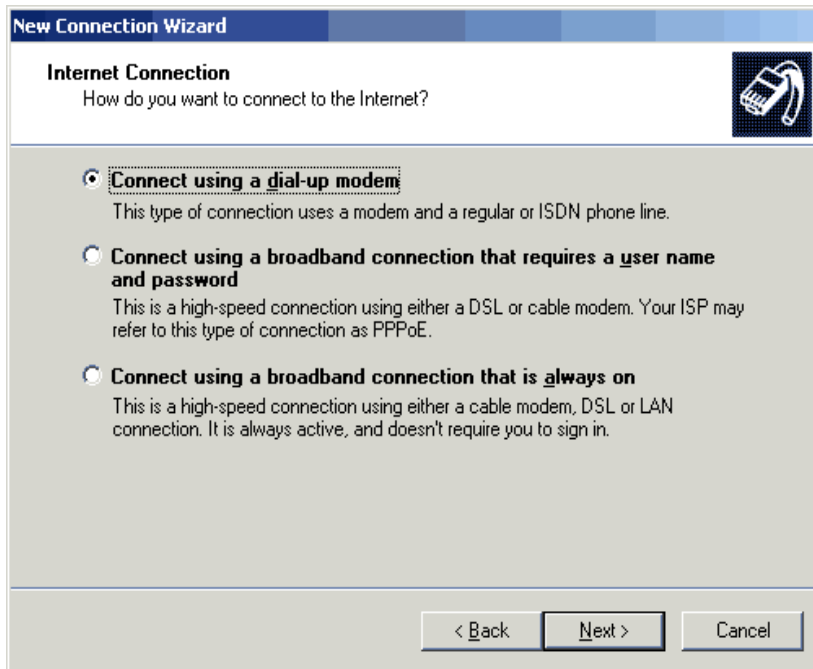
Select **"Connect to the Internet"**



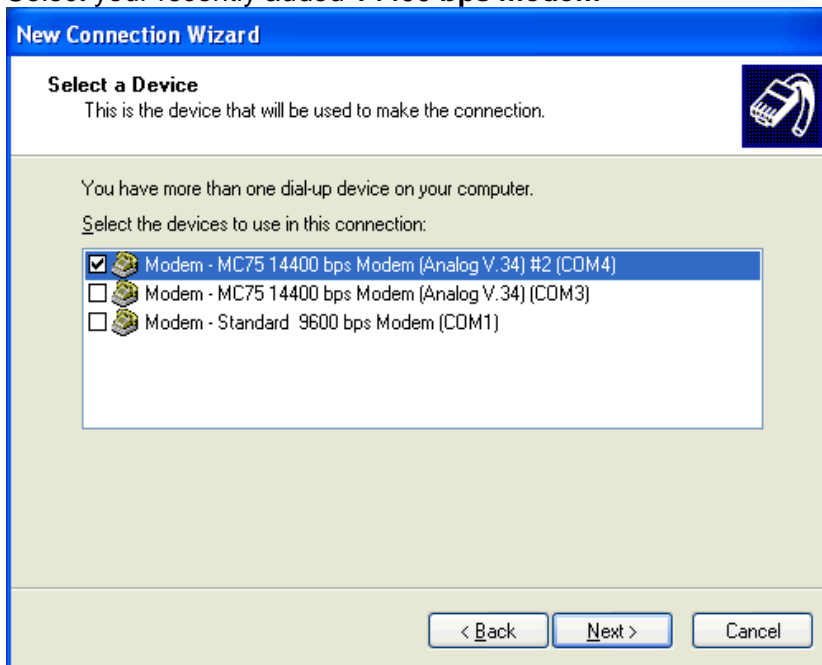
Select **“Set up my connection manually”**



Select **“Connect using a dial-up modem”**



Select your recently added 14400 bps modem



Type in a name for the connection

New Connection Wizard

Connection Name
What is the name of the service that provides your Internet connection?

Type the name of your ISP in the following box.

ISP Name

Edge Datserve APN

The name you type here will be the name of the connection you are creating.

< Back Next > Cancel

When prompted enter the number ***99***1#** as the dial-up number

New Connection Wizard

Phone Number to Dial
What is your ISP's phone number?

Type the phone number below.

Phone number:

*99***1#

You might need to include a "1" or the area code, or both. If you are not sure you need the extra numbers, dial the phone number on your telephone. If you hear a modem sound, the number dialed is correct.

< Back Next > Cancel

Enter allocated **username** and **password** for the DATALINX APN.
Also *de-select* the two check-boxes below.

New Connection Wizard

Internet Account Information
You will need an account name and password to sign in to your Internet account.

Type an ISP account name and password, then write down this information and store it in a safe place. (If you have forgotten an existing account name or password, contact your ISP.)

User name:

Password:

Confirm password:

Use this account name and password when anyone connects to the Internet from this computer

Make this the default Internet connection

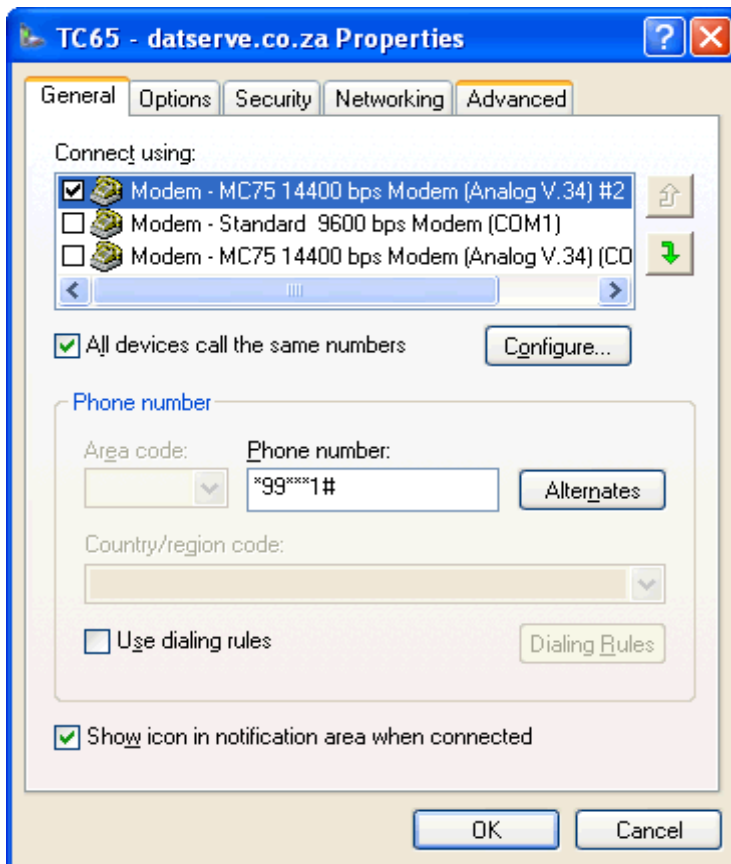
< Back **Next >** Cancel

Click **Next** and follow the instructions to finish the dial-up wizard. The dial-up connection should now be setup correctly.

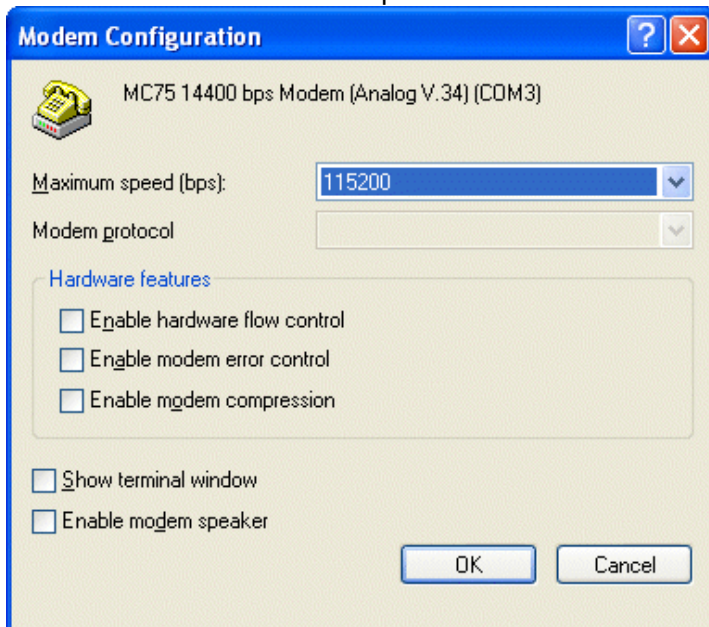
Select **Properties** when instructed to dial-up using your new connection.



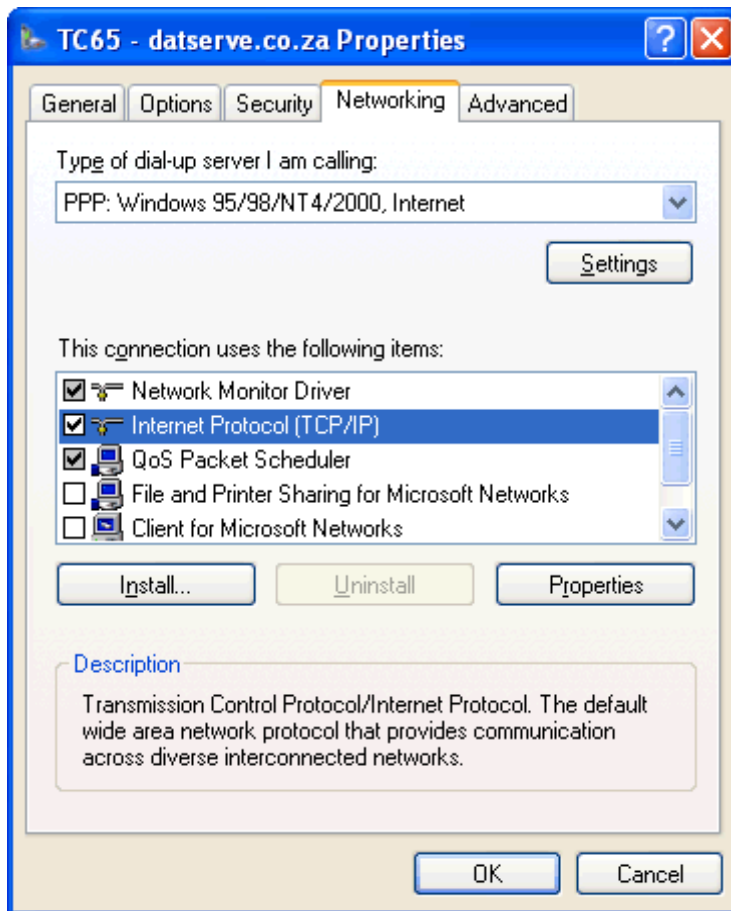
Select **Configure** in the General tab



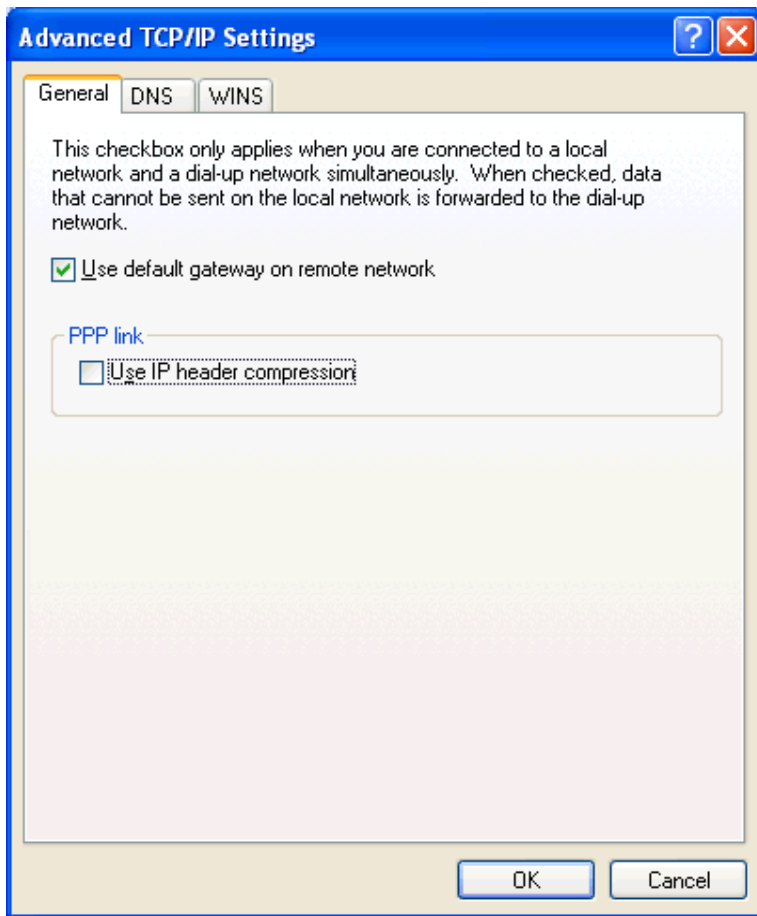
Select **115200** as Maximum speed and **uncheck** all boxes



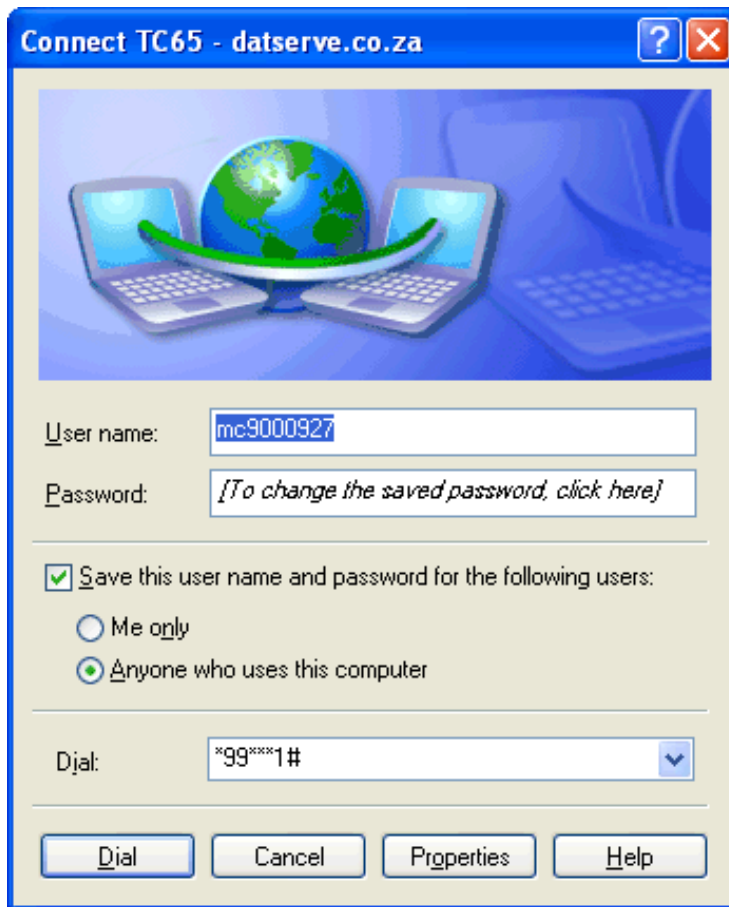
Select **Properties of Internet Protocol (TCP/IP)** in the **Networking** tab



Uncheck **Use IP header compression** in the **General** tab under **Advanced**

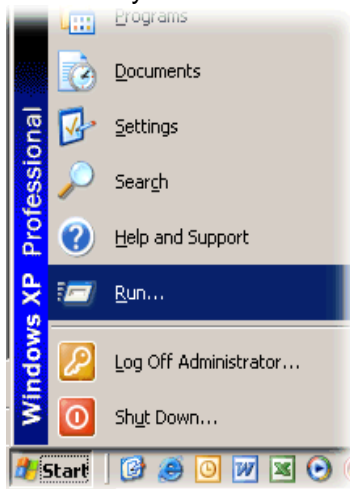


Select **OK** until you are back to the Connect screen and **Dial**



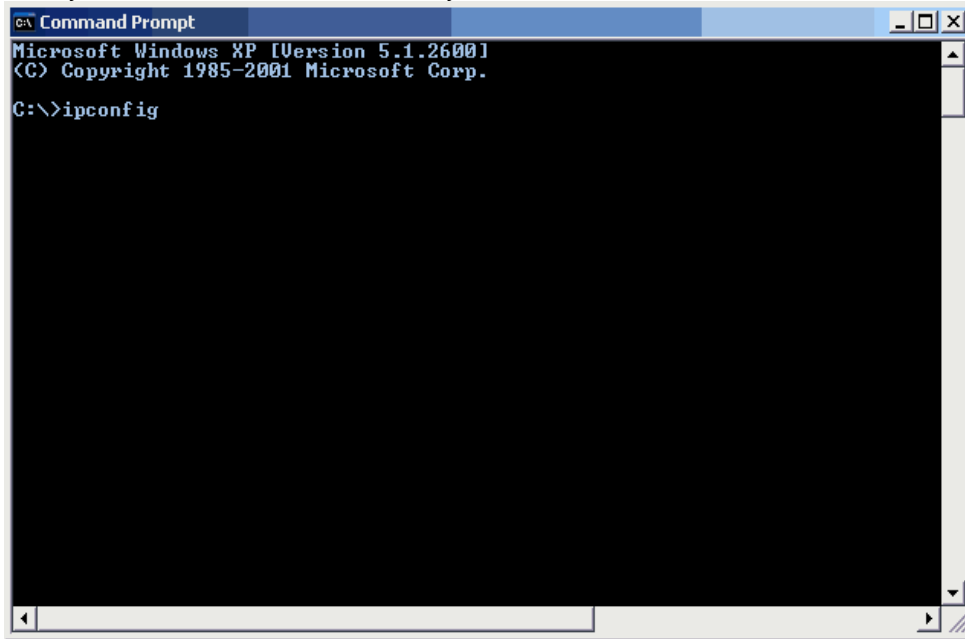
You should now connect to EDGE successfully.

To check your IP address is correct, open a DOS prompt. Press start and select Run.



Next type the word 'command' into the prompt box. A DOS prompt will now appear on your screen.

To get your IP address, type 'ipconfig' at the prompt and press enter. Check to make sure your IP address is the correctly allocated static IP address on the DATALINX APN.



```
Command Prompt
Microsoft Windows XP [Version 5.1.2600]
(C) Copyright 1985-2001 Microsoft Corp.
C:\>ipconfig
```