

Connecting to Datalinx APN Setting up a Windows modem driver.

Summary:

1. Add standard 9600 bps modem.
2. Configure modem to have no hardware handshaking.
3. Enter AT initialization command (Without <> brackets)....*Please take note of the Service Provider...MTN or Vodacom for next step*

For MTN - AT+CGDCONT=1,"IP","DATASERVE.CO.ZA"

For VODACOM - AT+CGDCONT=1,"IP","DATALINX.CO.ZA"

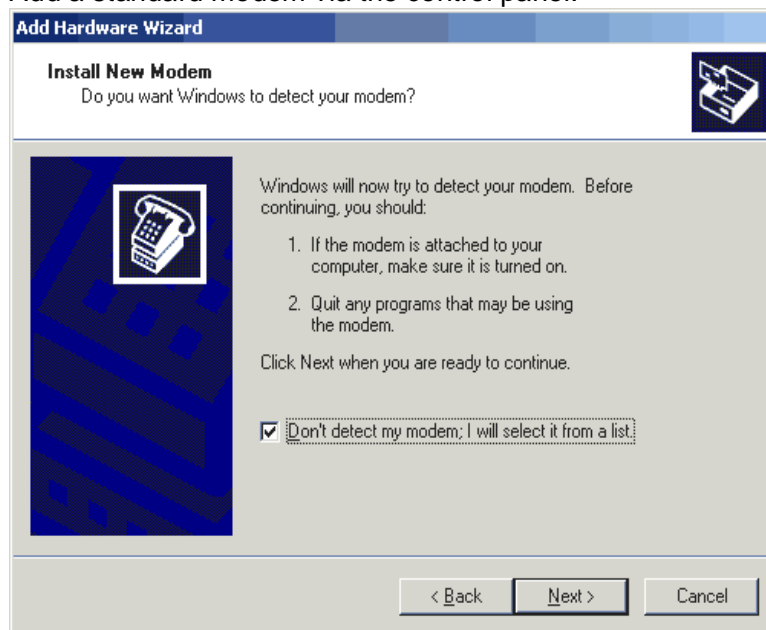
4. Create new dial-up connection.
5. Enter ***99***1#** as the dial-up number.
6. Enter username and password and press OK.
7. Check that your IP is correctly allocated by the APN.
8. If you will be using this connection for IP to IP connections, make sure that the "Use default gateway on remote network" checkbox is not checked

1. Abbreviations.

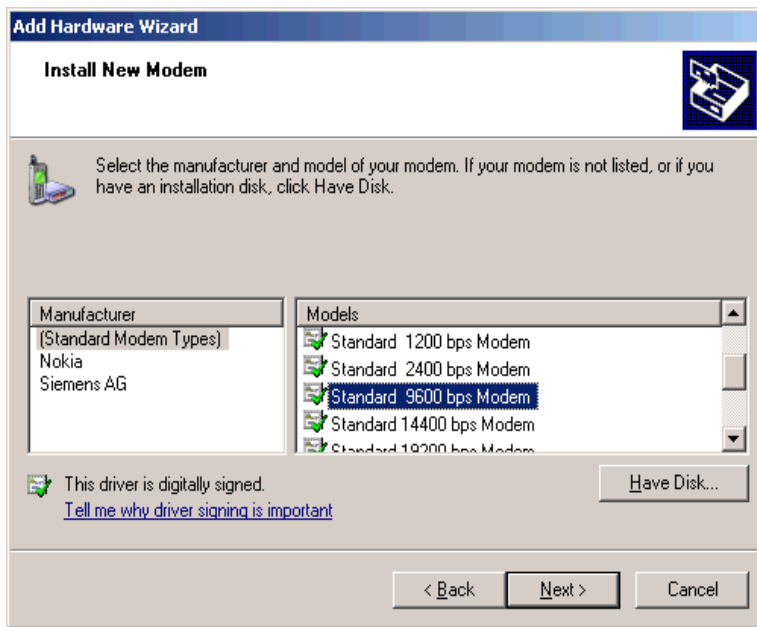
APN Access Point Name
CID Context Identity
PDP Packet Data Protocol

2. Adding a new modem.

Add a standard modem via the control panel.



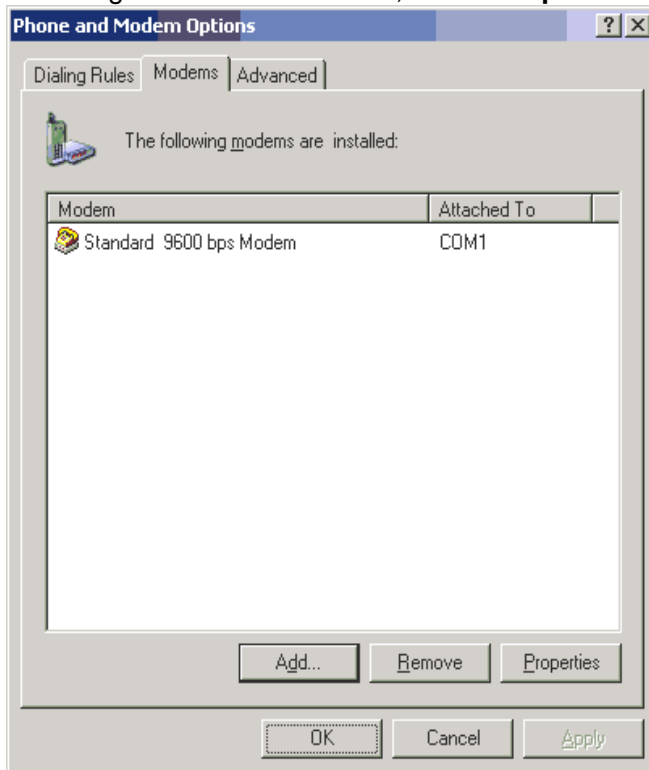
Select the standard 9600 bps modem.



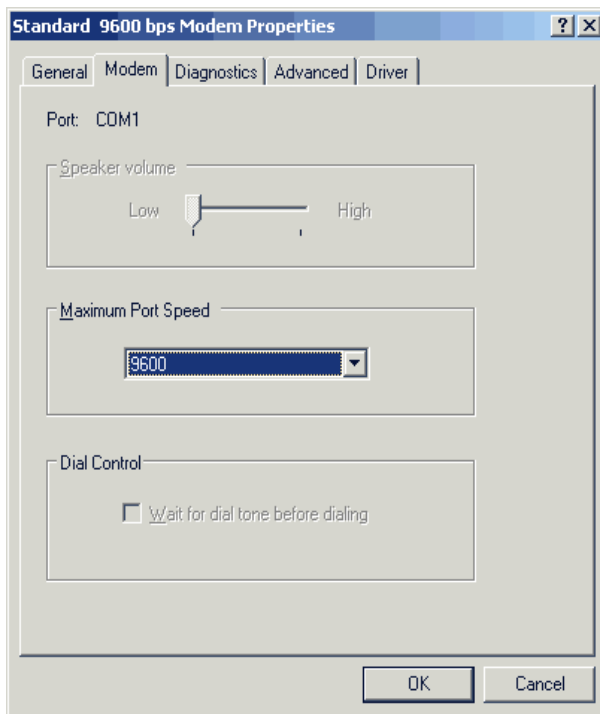
Follow the instructions on the screen and click **Next** to finish the modem installation.

3. Configuring the modem driver.

To configure the modem driver, select **Properties** of the newly created modem.



Change the baud rate to 9600 bps from the **Maximum Port Speed** drop down box.

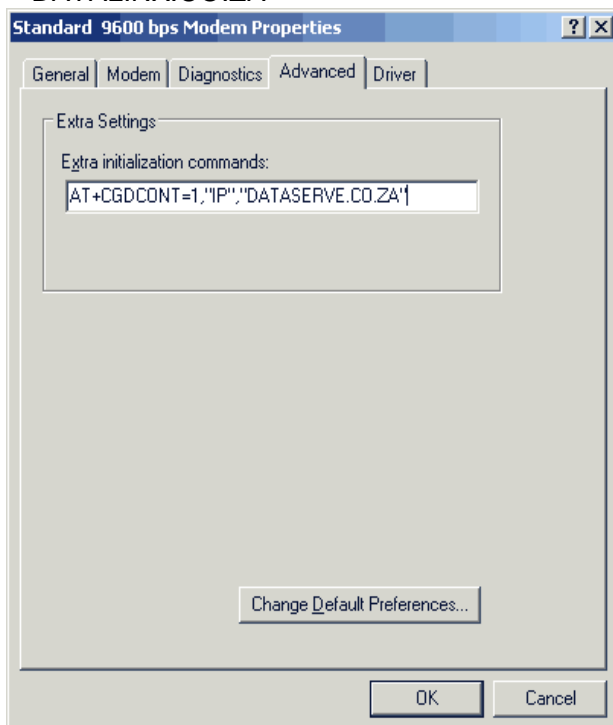


Next select the advanced tab and enter the following AT command in the **Extra Settings** option.

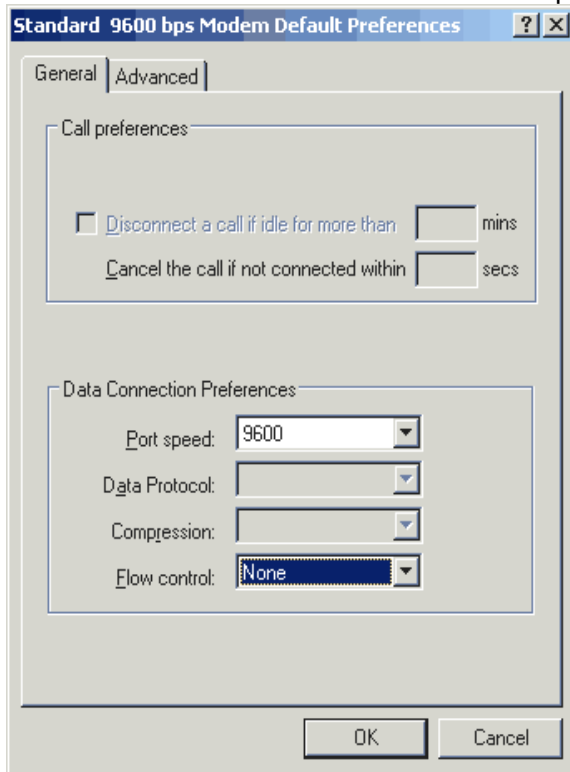
For MTN- **AT+CGDCONT=1,"IP","DATASERVE.CO.ZA"** *or*

For VODACOM - **AT+CGDCONT=1,"IP","DATALINX.CO.ZA"**

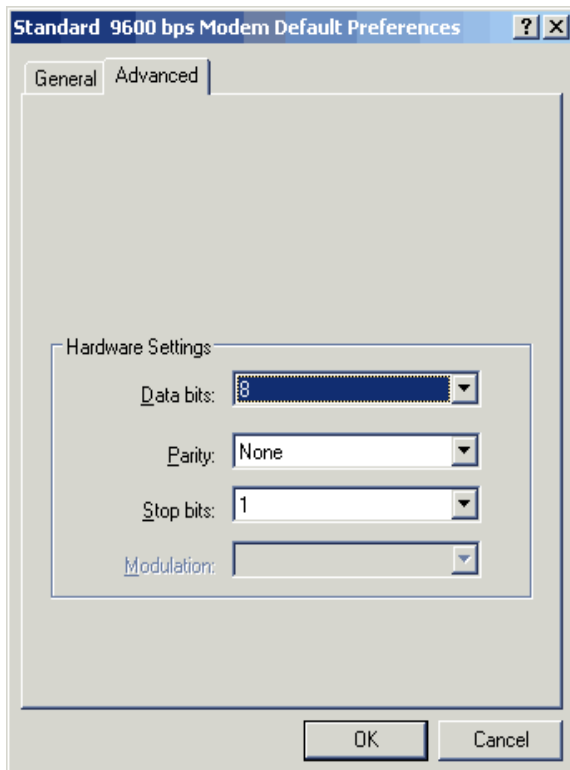
This AT command predefines a PDP context where the CID = 1, PDP type = IP and APN = DATASERVE.CO.ZA *or* = DATALINX.CO.ZA



Press the **Change Default Preferences** button at the bottom of the advanced window and select **None** from the **Flow control** drop down box.



Press the **Advanced** tab and select **None** from the **Parity** drop down box.



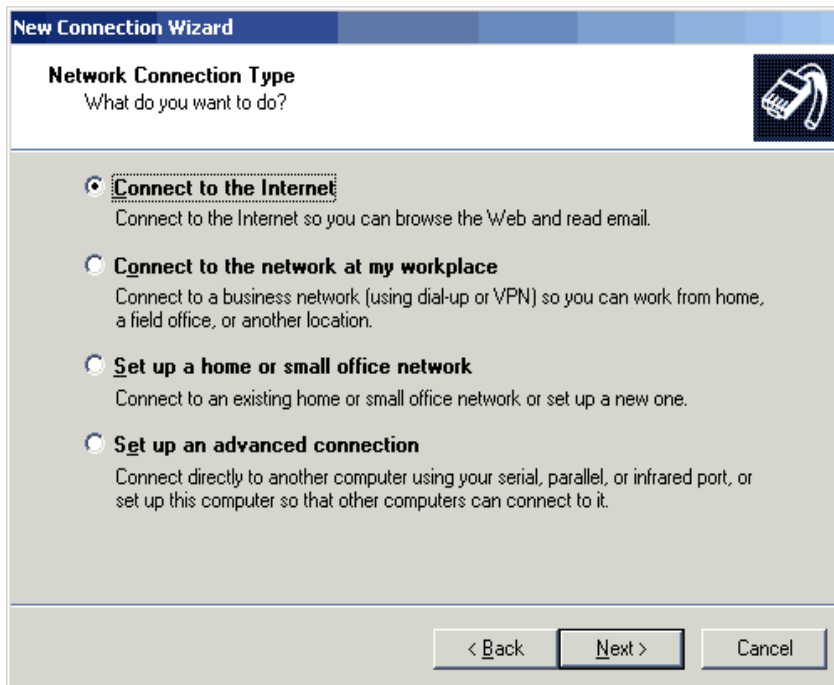
The modem is now configured. Press **OK** to continue.

4. Create a Dial-up Connection

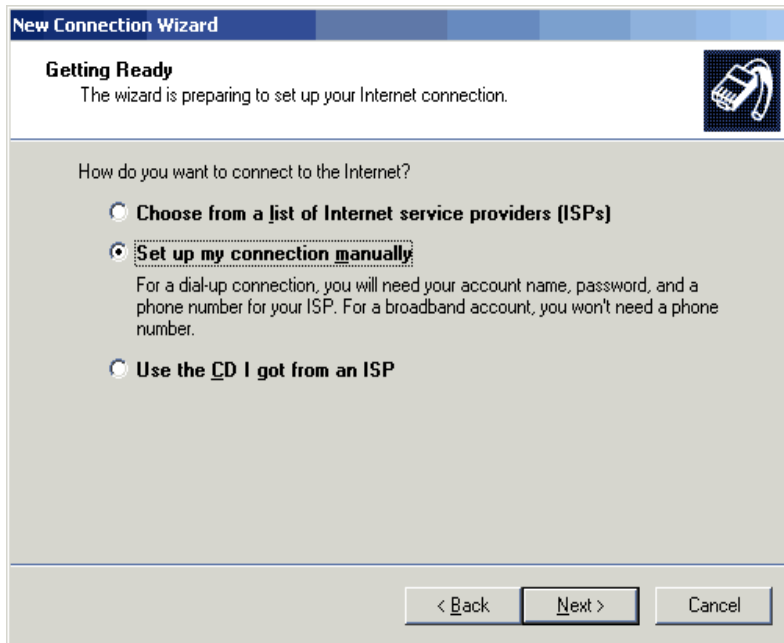
Create a new dial-up connection using the Connection Wizard.



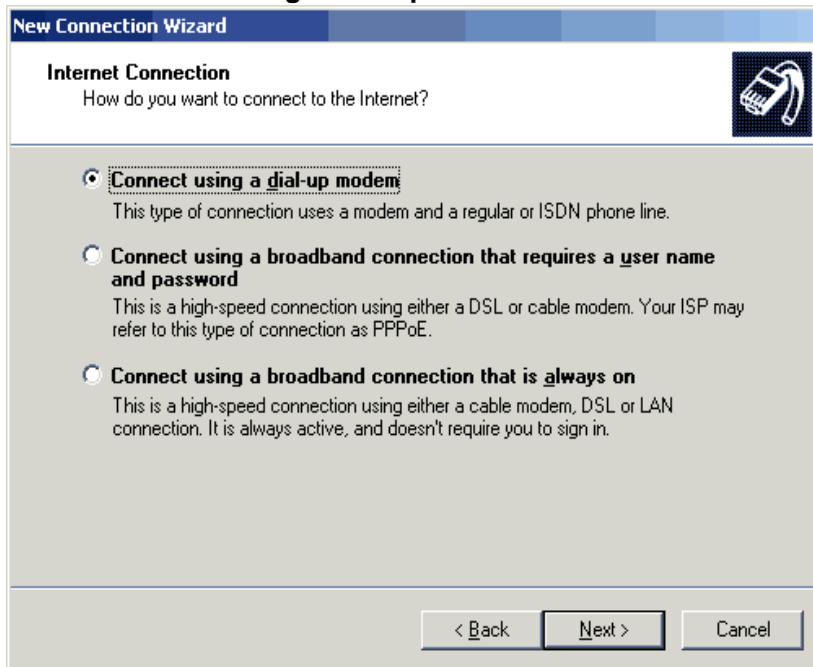
Select **“Connect to the Internet”**



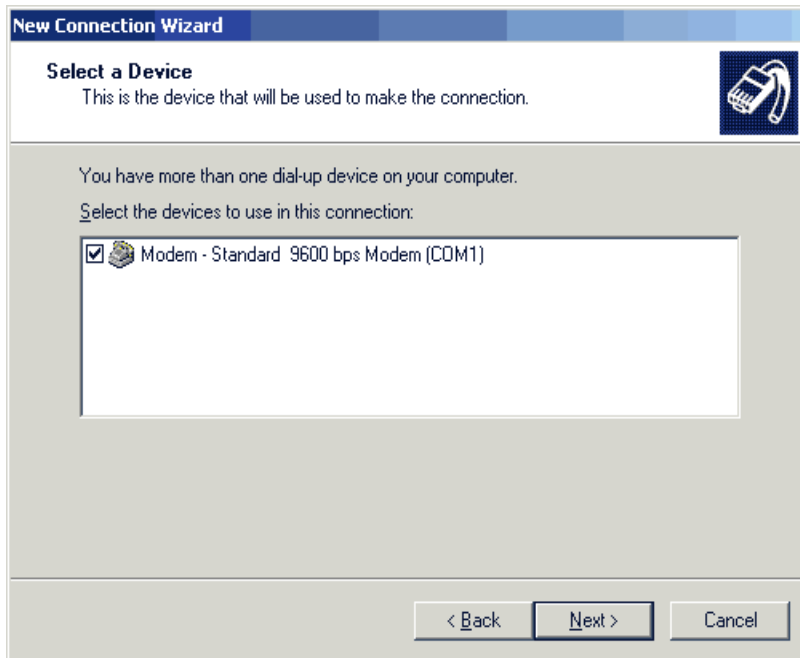
Select **“Set up my connection manually”**



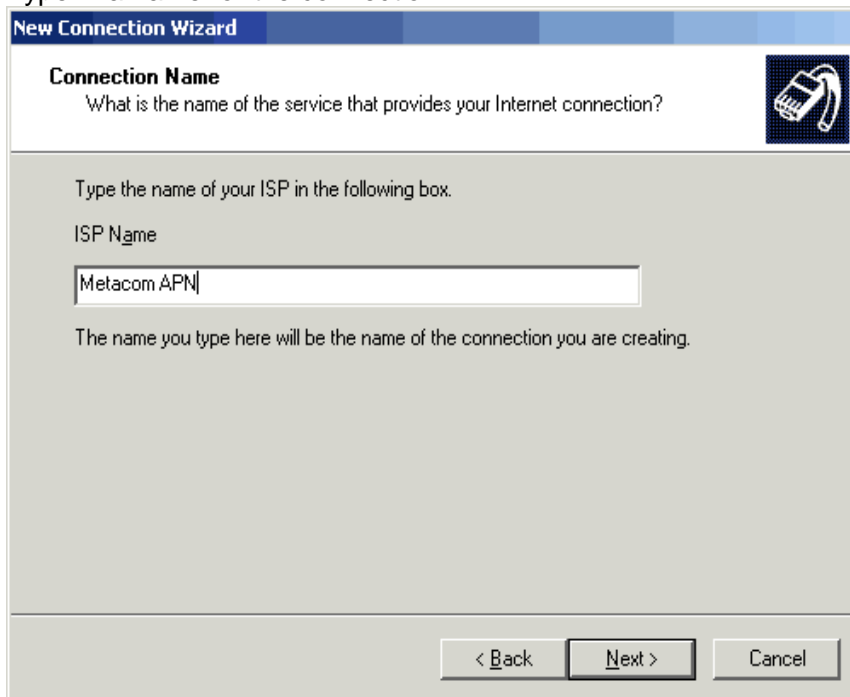
Select "Connect using a dial-up modem"



Select your recently added **9600 bps modem**



Type in a name for the connection



When prompted enter the number ***99***1#** as the dial-up number

New Connection Wizard

Phone Number to Dial
What is your ISP's phone number?

Type the phone number below.

Phone number:
*99***1#

You might need to include a "1" or the area code, or both. If you are not sure you need the extra numbers, dial the phone number on your telephone. If you hear a modem sound, the number dialed is correct.

< Back Next > Cancel

Enter allocated **username** and **password** for the DATALINX APN. Also *de-select* the two check-boxes below.

New Connection Wizard

Internet Account Information
You will need an account name and password to sign in to your Internet account.

Type an ISP account name and password, then write down this information and store it in a safe place. (If you have forgotten an existing account name or password, contact your ISP.)

User name:

Password:

Confirm password:

Use this account name and password when anyone connects to the Internet from this computer

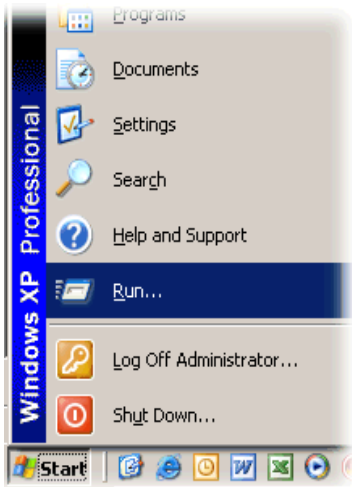
Make this the default Internet connection

< Back Next > Cancel

Click **Next** and follow the instructions to finish the dial-up wizard. The dial-up connection should now be setup correctly.

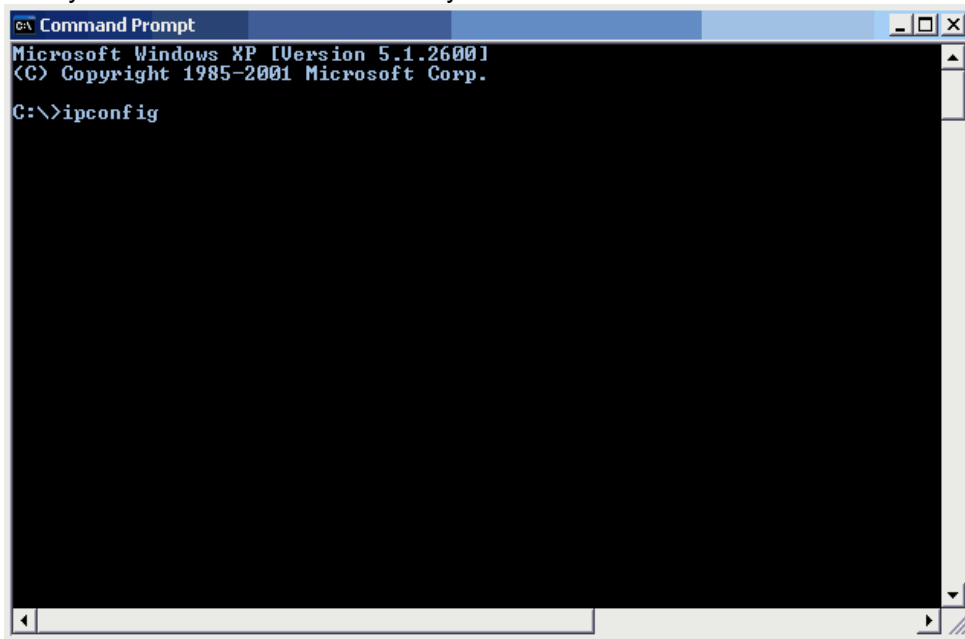
Once a GPRS connection has been established, you can, change the baud rate for faster downloads (up to 28.8Kbps). Ensure that the baud rate setting is changed in both the modem setup as well as in the dial-up setup.

To check your IP address is correct, open a DOS prompt. Press start and select Run.



Next type the word 'command' into the prompt box. A DOS prompt will now appear on your screen.

To get your IP address, type 'ipconfig' at the prompt and press enter. Check to make sure your IP address is the correctly allocated static IP address on the DATALINX APN.

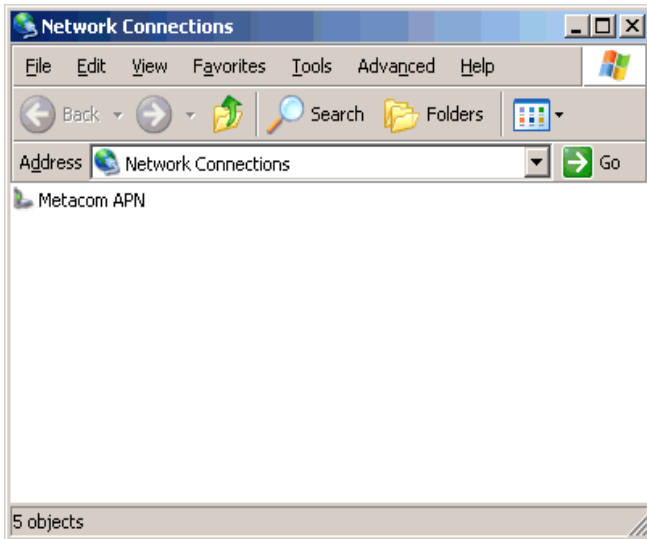


PLEASE NOTE!!

If you will be using this connection as a connection to the internet (for browsing, etc), then the following does not apply to you, however if you will be using this connection for IP to IP connections, please follow the next few instructions. If these steps are not done, Microsoft Outlook will use your GPRS connection as the default connection when downloading e-mail resulting in a very high GPRS bill at the end of the month.

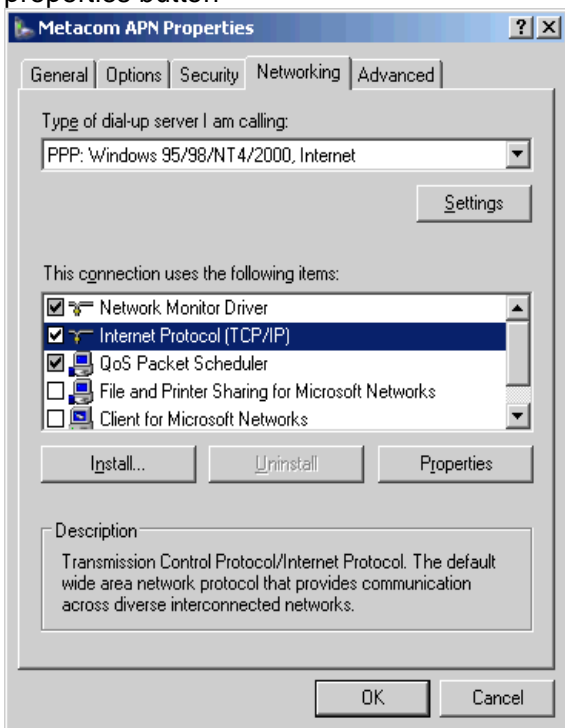
Open the properties of your connection by doing the following:

Click on START > SETTINGS > CONTROL PANEL > NETWORK CONNECTIONS

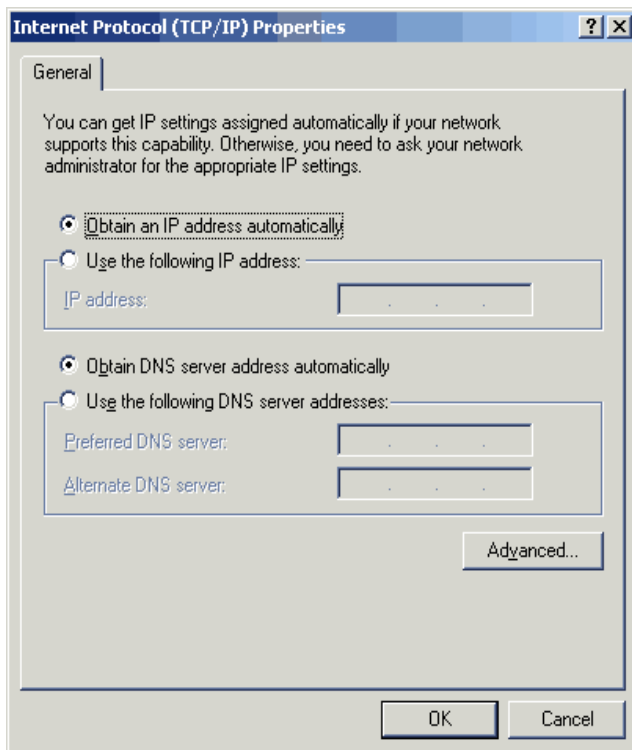


Right click on your connection and go to properties

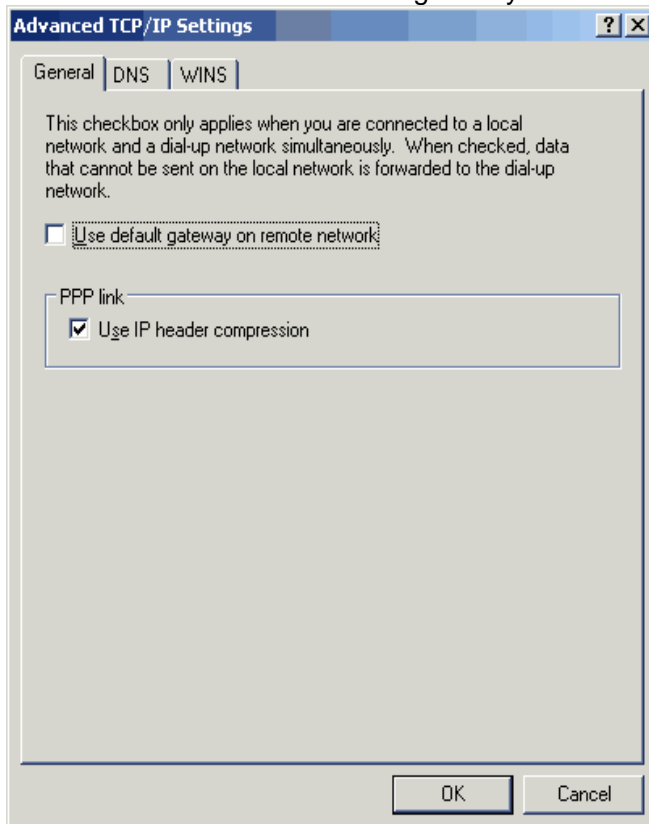
Click on the Networking tab, select the Internet protocol (TCP/IP) and click on the properties button



Click on the Advanced button



Make sure that the “Use default gateway on remote network” checkbox is not checked



Close all windows by clicking “Ok” on each one

